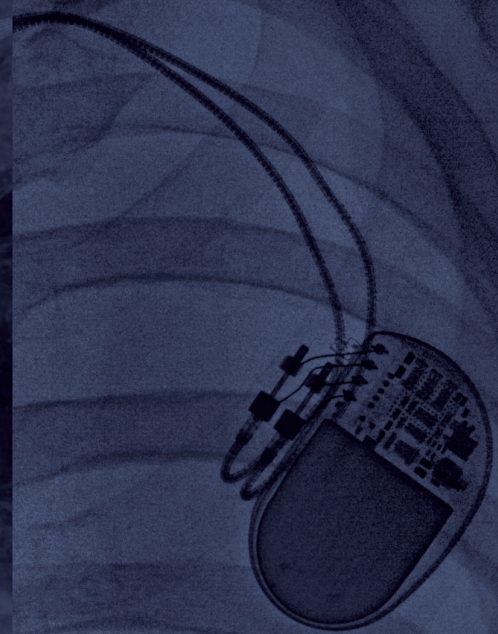


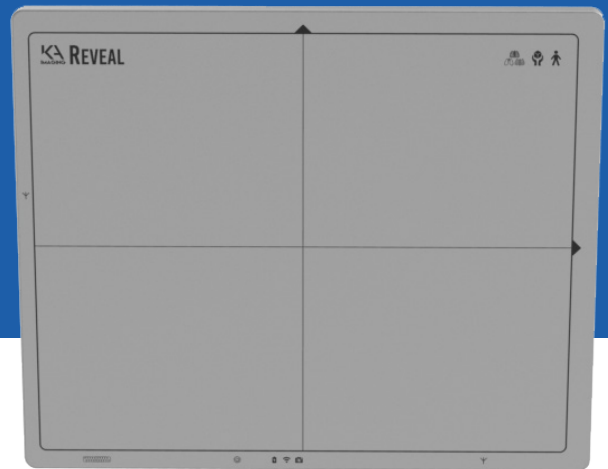
REVEAL™ MOBI PRO
POWERED BY SPECTRALDR™



**DUAL-ENERGY
MOBILE
X-RAY SYSTEM**



INNOVATION HAS NEVER FELT SO FAMILIAR.



On one side, a imaging system designed to handle a wide range of clinical applications in nearly any imaging environment. On the other side, the innovation of KA Imaging's Reveal 35C detector powered by *Spectra/DR* technology. Together, a mobile X-ray solution that will allow for dual-energy subtraction at the bedside.

The Reveal Mobi Pro integrates KA Imaging's Reveal™ 35C detector with *Spectra/DR*™ technology into a complete mobile X-ray solution. Reveal's ability to simultaneously acquire conventional and dual-energy

images with a single exposure at the bedside improves hospital and patient outcomes and protects revenue by reducing outflows.

With features that make work comfortable for both technicians and patients, this mobile system can be integrated into existing workflows. The clinical benefits of *Spectra/DR* technology allow for more diagnostic confidence without increasing reading time. Innovation doesn't have to be complicated. With Reveal Mobi Pro, it has never felt so familiar. Coming soon.

The Reveal Mobi Pro is a product in partnership with Del Medical.

SPECTRAL DR™:

3 IMAGES, 1 EXPOSURE, INCREASED DIAGNOSTIC INFORMATION WITH THE SAME WORKFLOW

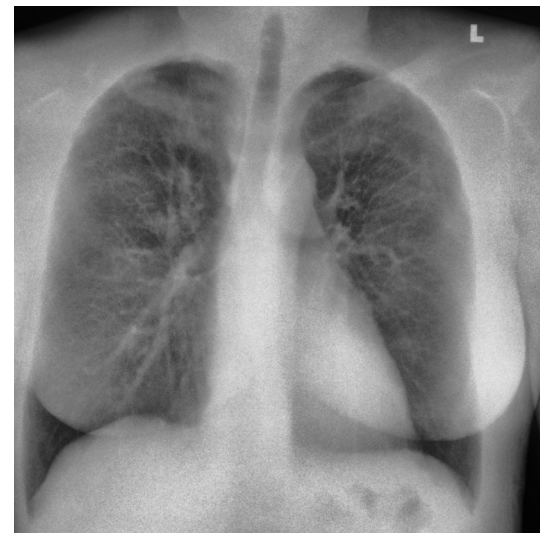
KA Imaging's SpectralDR™ technology enables dual-energy subtraction, providing bone and tissue differentiation with a single standard X-ray exposure. It acquires three images simultaneously (DR, bone and soft tissue dual-energy X-ray images).

The technology, which is inside the Reveal 35C detector, mimics the workflow, dose and techniques of state-of-the-art mobile DR X-ray. With the Reveal Mobi Pro, it is offered in a fully integrated mobile system.

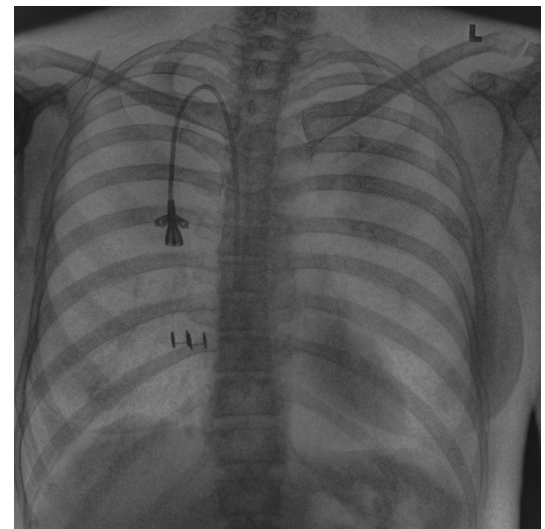
Dual-energy images are clinically proven⁴ to enhance the visualization of lung nodules, pneumonia, line and tube tips, pneumothorax, retained surgical objects and more.



TRADITIONAL DR IMAGE



SOFT TISSUE IMAGE



BONE IMAGE

- ✓ 33% more pneumonia cases found compared to X-ray thanks to dual-energy images²
- ✓ 43% more lesion visibility when dual-energy images were included¹
- ✓ Increased confidence in 57% of ICU cases thanks to dual-energy images with no added reading time³.
- ✓ Better visibility of lines and tube tips³.
- ✓ Improves hospital and patient outcomes;
- ✓ Increases revenue through incidental findings;
- ✓ Protects revenue by reducing outflows

POWER, MOBILITY AND EASE OF USE



Compact, collapsible
column design



Reveal™ 35C
Spectra/DR™ technology



High frequency
40KW generator



Motor assisted movement



Integrated DR Workstation



8-hour battery life



REFERENCES

1. S. L. Maurino, K. S. Karim, V. Venkatesh. Diagnostic value of single-exposure dual-energy subtraction radiography in lung lesion detection: initial results. European Congress of Radiology-ECR 2022, 2022
2. Sanchez F, Kandel S, May M, Ronghe S, Rogalla P. Diagnostic value of dual-energy chest x-ray in immunocompromised patients to rule out pneumonia: initial results. European Congress of Radiology-ECR 2021, 2021
3. Rogalla P, Karim K. Added diagnostic value of portable dual-energy chest X-ray in a non-radiological reviewing environment. Radiological Society of North America-RSNA 2022, 2022
4. Visit <https://www.kaimaging.com/science-center/reveal-technology/> for more information and references on dual-energy.

Reveal 35C: FDA 510(k) cleared. Reveal Mobi Pro: coming soon, not available for sale.

KA Imaging Inc.
3-560 Parkside Dr
Waterloo, ON
Telephone: 1-226-215-9897

Sales and Product Information
sales@kaimaging.com

