

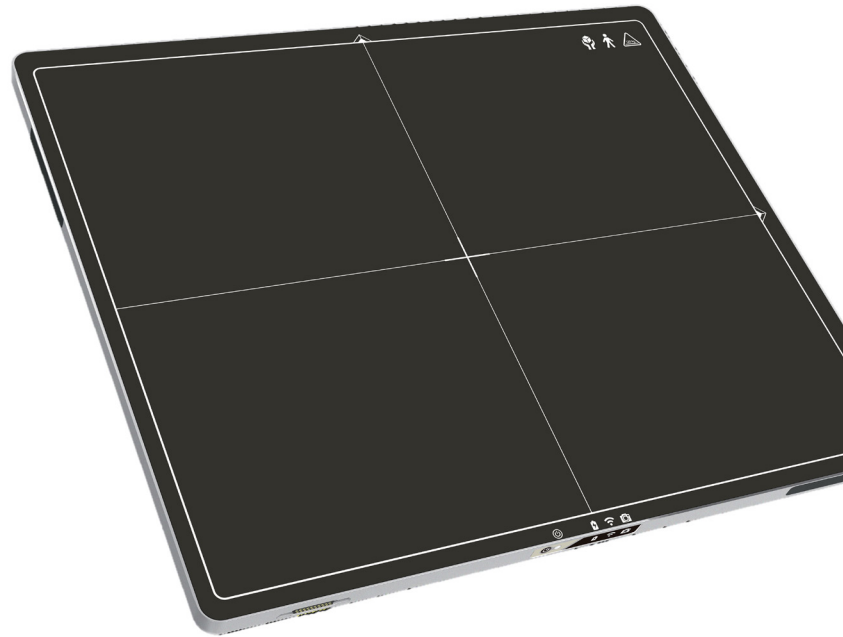
# SIGHT™

## FLAT PANEL DETECTOR



## A **LIGHTWEIGHT** AND **POWERFUL** SOLUTION

With advanced features typically only found in high-end detectors, Sight™ is KA Imaging's flat panel detector, with an improved Modulation Transfer Function (MTF) and Detective Quantum Efficiency (DQE) to provide uncompromising image quality. In addition, Sight™ boasts a lightweight design and low X-ray dose, making it ideal for multiple applications.



## FAST TRANSFER

Two-second image transfer achieved through a new antenna design which enables stronger Wi-Fi signal reception in any orientation. Built-in wireless communication supporting IEEE 802.11 ac enables state-of-the-art transfer speed.

## SELF MONITORING

Sight™ has numerous built-in sensors including temperature and tracking for continuous monitoring even while the panel is powered off, to ensure proper panel storage and protection.



Featherweight design (2.7 kgs)



IPX6\* rated for water resistance



Hot swappable battery\*\* (8 hours)



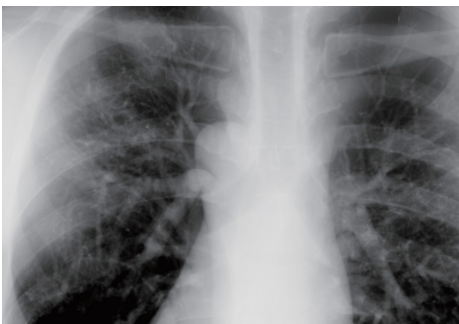
Large store capacity (300 images)



CsI and GOS are both available



AED for use with any system



# TECHNICAL SPECIFICATIONS

	V 14	V17
Outline Dimensions	383 x 460 x 15 mm	460 x 460 x 15 mm
Sensor Array	a-Si photodiode	
Scintillator	CsI / GOS	
Resolution	2500 x 3052	3072 x 3072
DQE(1)	Min. 40% / Typ. 48%	
Pixel Size	140 um	
Grayscale	16 bit	
Image Storage	300 offline images	
Wi-Fi	802.11.ac / 2 antennas / 2s scan to display / AP mode	
Drop Height	70 cm	
Housing Material	Mg-Al alloy	
Weight	2.7 kg	3.2 kg
Waterproof	IPX6 *	
Durability (Face load / Point load)	300 / 120 kg	
Battery Autonomy	8 hours **	
Trigger Mode	AED mode / Software SYNC mode	
Calibration Data	10 set of calibration data can be stored in it	
Log File	Log file, sensor data and other calibration data are available	
Accessories	Battery / Magnetic connector cable with ethernet and power	
Operation temperature / Humidity	10 ~ 35 °C / 15 ~ 80%	

\*An IPX6 rating does not indicate compliance with and the detectors have not been tested for compliance with any other IPX\_ ratings.

\*\*In SYNC mode, user can capture more than 1000 images at every 30 seconds and lasting over 8 hours.

## About KA imaging

KA Imaging was founded in 2015 as a University of Waterloo spin-off. The company has successfully developed a line of innovative x-ray imaging products in the areas of micro-computed tomography, high efficiency x-ray area detection and multi-energy spectral separation detection. KA is proud to strive to understand the needs of its customers, ensuring to stay ahead of the innovation curve.

KA Imaging Inc.  
3-560 Parkside Dr  
Waterloo, ON  
T: 1-226-215-9897  
www.kaimaging.com

Sales and Product Information  
sales@kaimaging.com

Customer Support  
support@kaimaging.com

Investor Information  
investor@kaimaging.com

Media Inquiries  
media@kaimaging.com



Sight v2021.4